



Lucre USA Bearing Corp. is the exclusive North American division of Wepon Bearings Co., LTD. Wepon Bearings has built their brand and reputation by providing high quality, reliable bearing solutions and superior value since our inception in 1990. The demand for increased accuracy and smooth mechanical operation as industries move forward with cutting-edge technologies remains constant.

We continue to expand our product portfolio as well as improve our capability to service more and more customers. Our commitment to keep pace by investing in new technology ensures the highest possible service level.



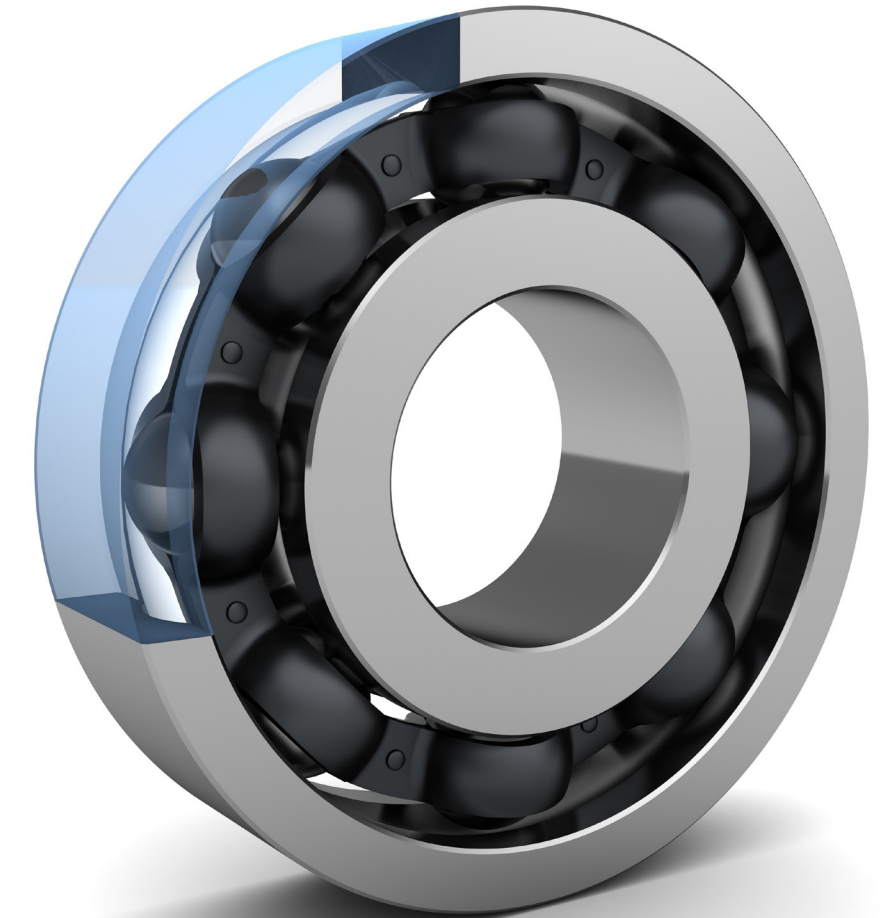
- Full vertical integration of the manufacturing process  
No outsourcing of primary components
- All manufacturing is done in house
  - ISO9001 and TS16949 Certification
  - Production material, processing, and testing lowers client costs
  - 440C, XDISNW stainless steel or 52100 high carbon chromium alloy steel
  - ABEC 3-7 standard suitable for high speed motion with operational accuracy
  - Smooth surface finish reduces internal friction and vibration

- Continuously optimized quality includes 24-point manufacturing checks, for example:
- ABEC 7 vibration standard
  - ZV noise testing
  - Destructive testing



- US market support based in Richmond, VA with regional support
- Access to engineering and application support
- Fast, reliable service and support
- Regional warehouses in USA, China, and Germany
- LTA's, Stocking, and Supply Plans available

TS16949



6710 Everglades Dr. Richmond, Virginia 23225  
Tel: 804-658-0977 [www.lucre-usa.com](http://www.lucre-usa.com)

"One of the most dependable manufacturers of bearings providing Precision, Quality, and Value since 1990"





PUMPS



COMPRESSORS



ELECTRIC MOTORS



ROBOTICS



Dependable Precision, Quality, Value, and Service

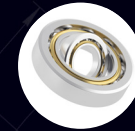
Lucre USA Bearing Corp. is the exclusive North American division of Wepon Bearing, a vertically integrated bearing manufacturer with warehouses in VA and CA. We are ISO:9001 and TS:16949 certified

Vertical Integration



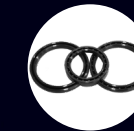
Deep Groove Ball Bearings

Being the most versatile and widely used type of bearing in the world, deep groove ball bearings come with many designs and varieties. Lucre has a selection of standard size stock as well as customization capabilities with world class precision capabilities.



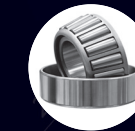
Angular Contact Ball Bearings

Lucre angular contact ball bearings provide customers with solutions to accommodate radial and axial loads simultaneously. Our high precision angular contact ball bearings are used in high speed applications. This series also includes our high precision four-point contact ball bearings.



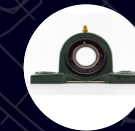
Thin Section Ball Bearings

Lucre thin section bearings enables engineers to be more flexible by increasing space, reducing weight and friction all while providing high levels of precision in motion. Lucre also produces custom thin section bearings in a broad range to meet our client's application needs.



Taper Roller Bearings

Lucre Tapered Roller Bearings construction is intended for combination loads, such as dual acting axial and radial loads. Applications include agriculture, robotics, axle systems, gear box, engine motors and reducers, propeller shaft, railroad axle-box, differential, wind turbines, etc.



Pillow Block

Our ball housed units can be ordered pre-assembled with bearings housings seals and locking systems. Our cast iron, pressed steel and additional options material supports overall dependency on our pillow blocks and flanged units. Applications include Material Handling, Food Processing, Belt Drives, Conveyors, Baggage Handling, Medical Machinery, Packaging Machinery, etc.



RAW MATERIAL  
INSPECTION-TESTING



MANUFACTURING  
CONTINUOUS FLOW



ENGINEERING  
CUSTOMER SPECIFICATION



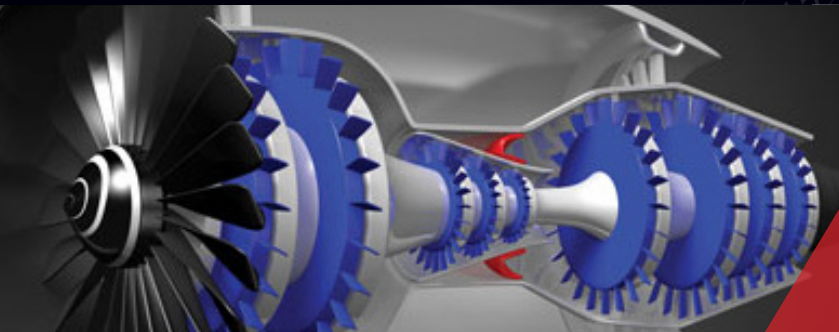
QUALITY  
ABEC 3-7



INVENTORY  
DIRECT SHIPMENT



CUSTOMER  
SATISFACTION



AEROSPACE



MATERIAL HANDLING



RAILWAY



OFF ROAD / HIGHWAY



MEDICAL